

THE RIGHT VIBE FOR  
INDUSTRIAL  
AUTOMATION



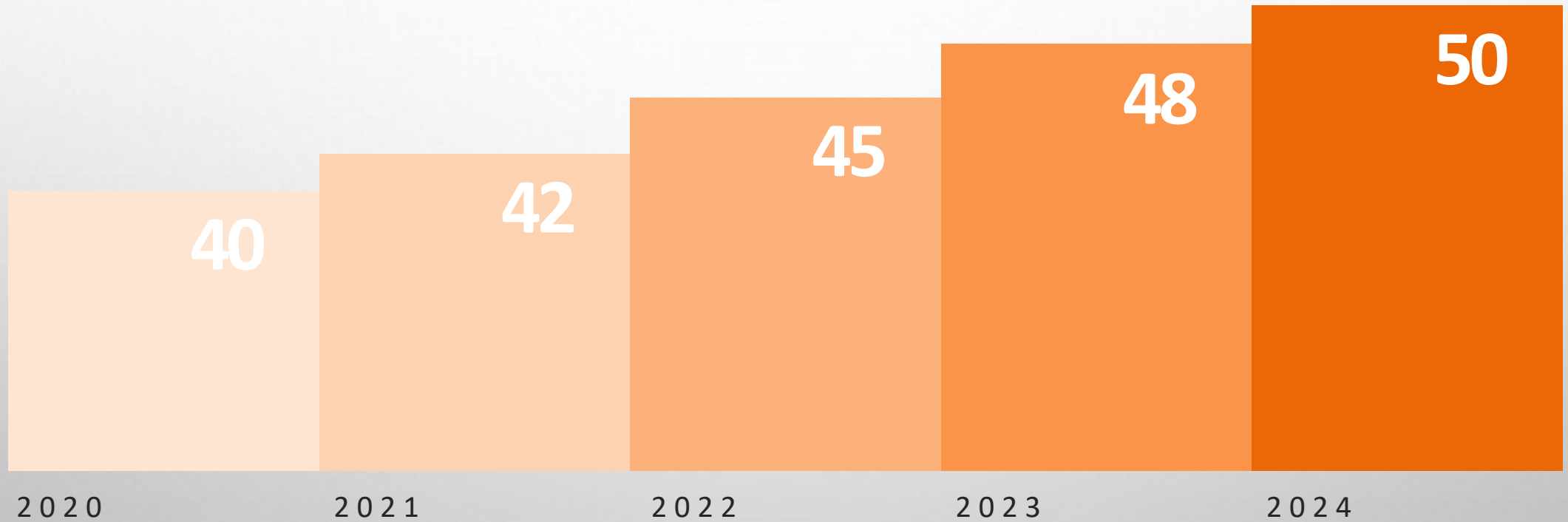
## ➤ L'AZIENDA



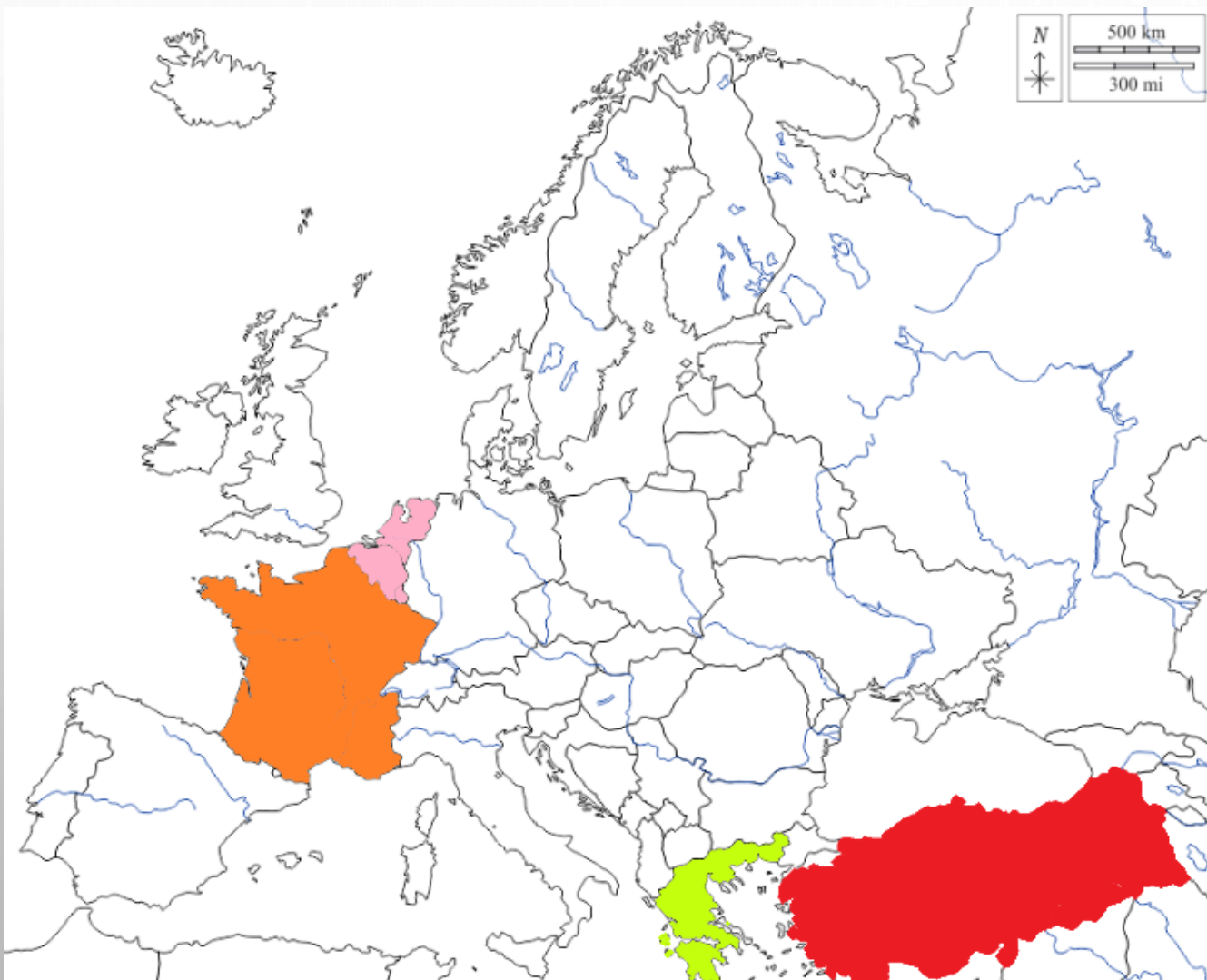
*Tumac S.R.L. è un'azienda leader nella progettazione e produzione di sistemi e componenti per l'automazione industriale. Forte di un know-how e R&D consolidati in oltre cinquant'anni di attività, l'attività opera nei più svariati settori. Fondata nel 1965 a San Giuliano Milanese, Tumac continua ad operare nella stessa sede.*

L'alta qualità delle materie prime, porta i nostri prodotti a distinguersi per le alte performance raggiunte e per la lunga tenuta. I nostri sistemi di alimentazioni vengono interamente costruiti ed assemblati nelle officine Tumac, e testati nei nostri laboratori con rigidi protocolli.

➤ DIMENSIONE AZIENDALE PER NR. DIPENDENTI



➤ RIVENDITORI TUMAC IN EUROPA



FRANCIA → DAI PRIMI ANNI DELLA NASCITA DELL'AZIENDA

BENELUX → DAI PRIMI ANNI DELLA NASCITA DELL'AZIENDA

GRECIA → DAL 2022

TURCHIA → DAL 2022



**COMING SOON  
COLLABORAZIONE IN USA**



## SERVIZI



➤ **ASSISTENZA PRE ACQUISTO  
TECNICO - COMMERCIALE**

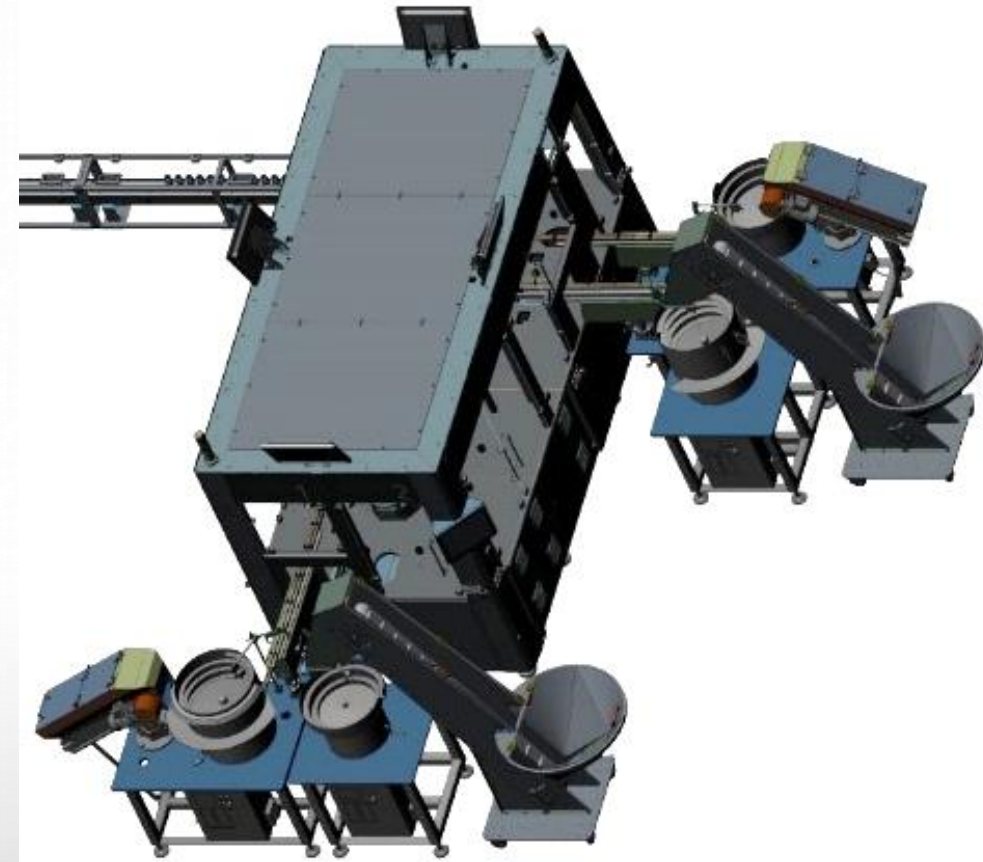
☑ **DISPONIBILITÀ**

☑ **EFFICIENZA**

☑ **TEMPESTIVITÀ**

➤ **ASSISTENZA POST VENDITA**

**ITALIA  
EUROPA  
INTERNAZIONALE**

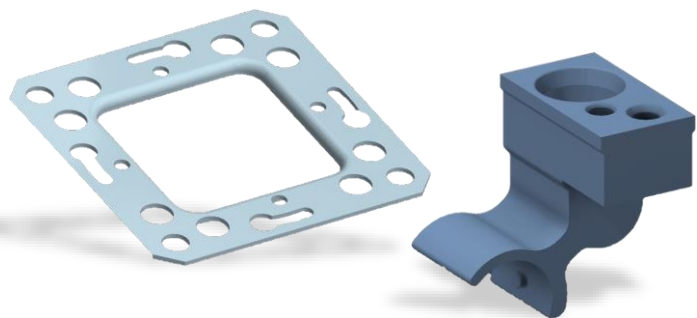




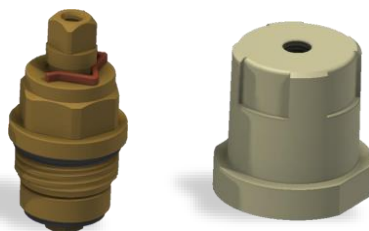
## SETTORI DI APPLICAZIONE



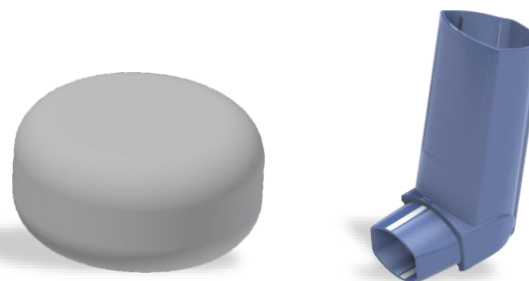
### APPLIANCE



### IDRAULICA



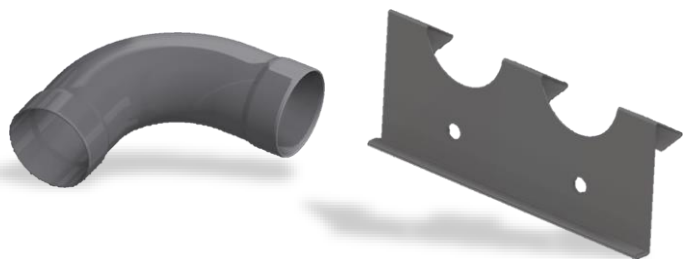
### PHARMA



### COSMETICO



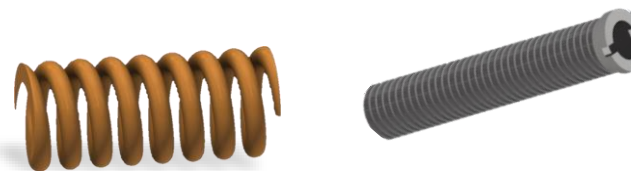
### INDUSTRIALE



### FOOD & BEVERAGE

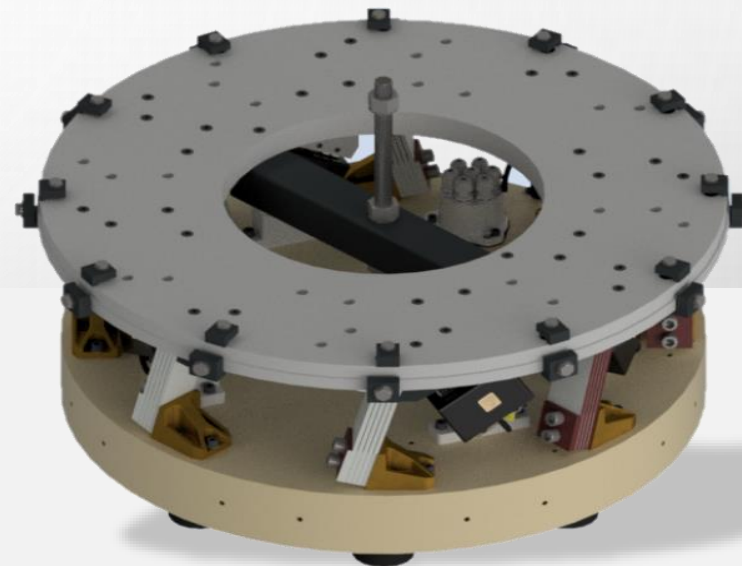
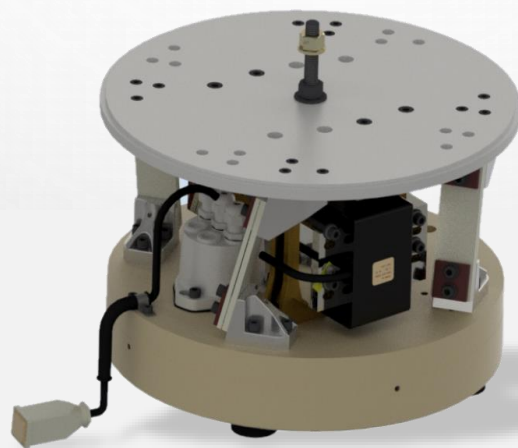


### AUTOMOTIVE





BASI VIBRANTI CIRCOLARI

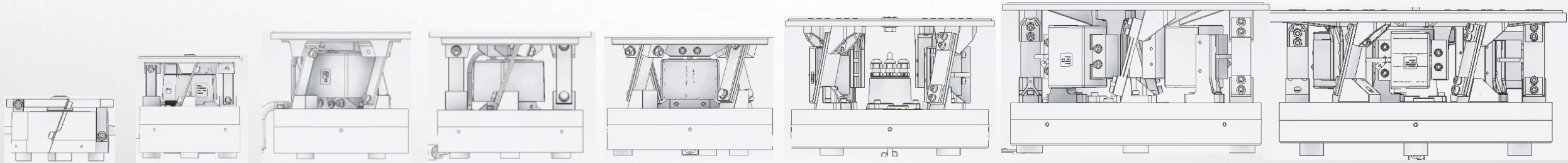




PRODOTTI



### BASI VIBRANTI CIRCOLARI



CHTB 10

CHTB 15

CHTB 20

CHTB 25

CHTB 30

CHTB 35

CHTB 40

CHTB 50

Ø 100mm

Ø 150mm

Ø 200mm

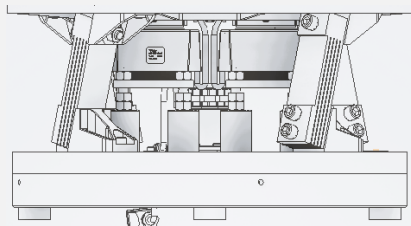
Ø 250mm

Ø 300mm

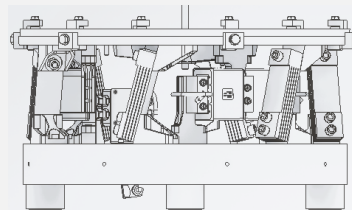
Ø 350mm

Ø 400mm

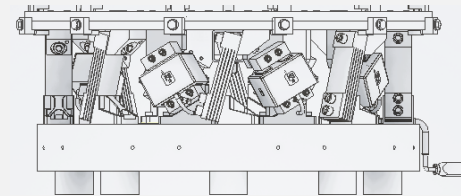
Ø 500mm



CHTB 601



CHTB 61



TB 10

Ø 500mm

Ø 610mm

Ø 750mm

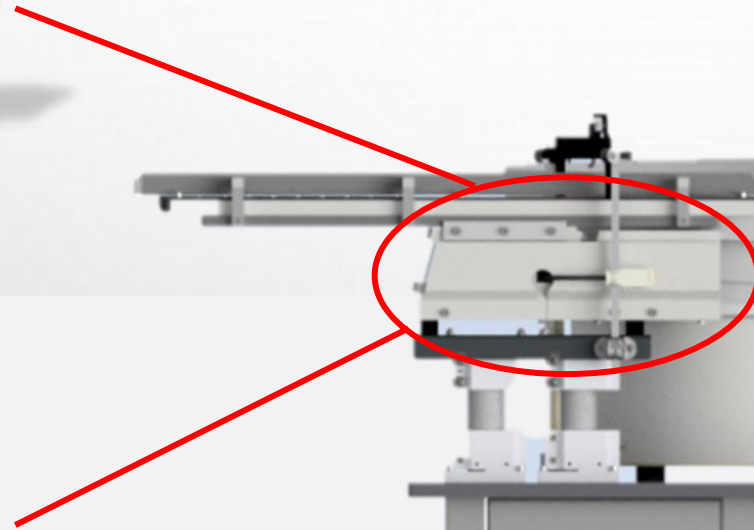
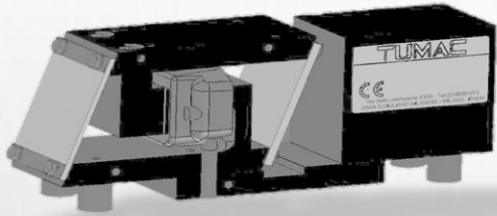




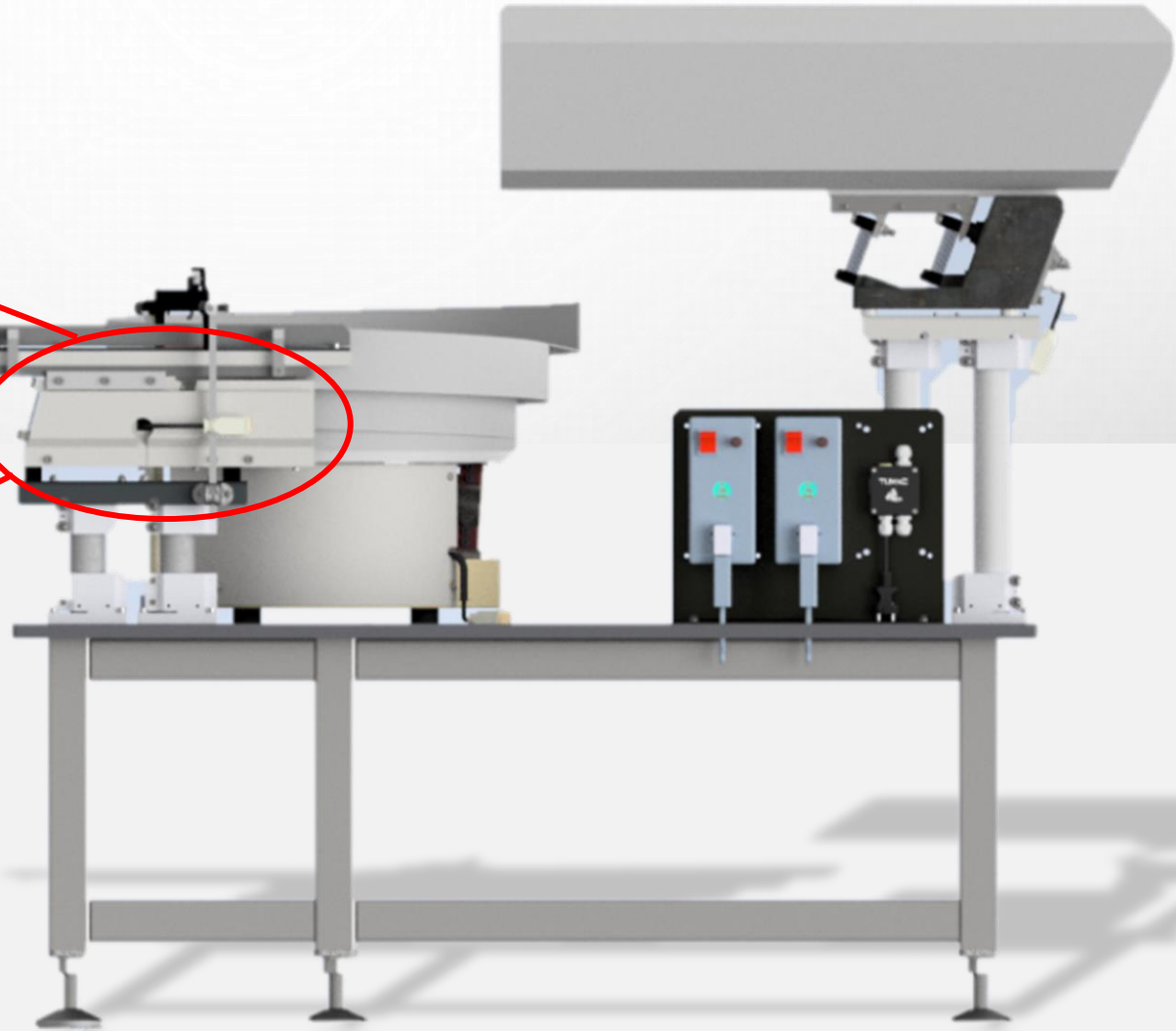
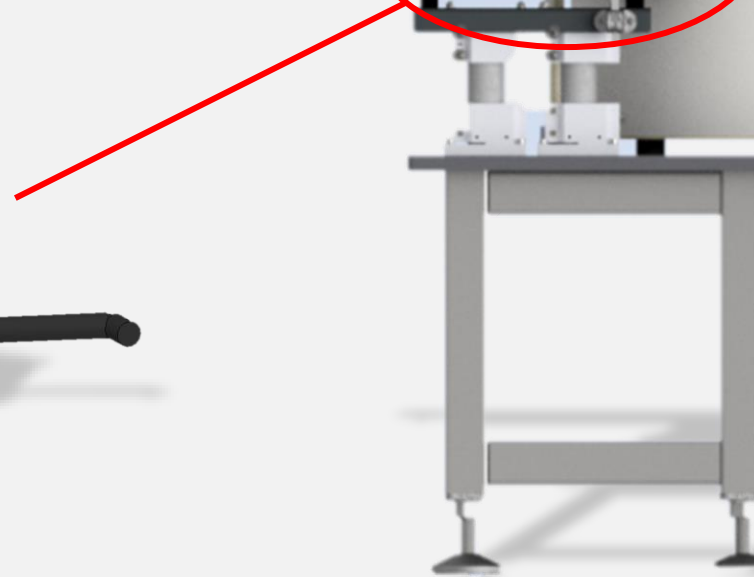
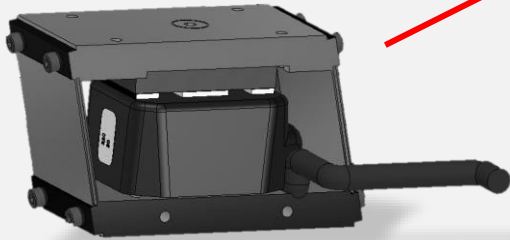
## BASI VIBRANTI RETTILINEE



VERSIONE CHTR/S



VERSIONE CHTR





## CONTENITORI



CHIOCCIOLA

CONICO

CILINDRICO





## CONTENITORI



CONICO ALLUMINIO



CONICO FIBRA



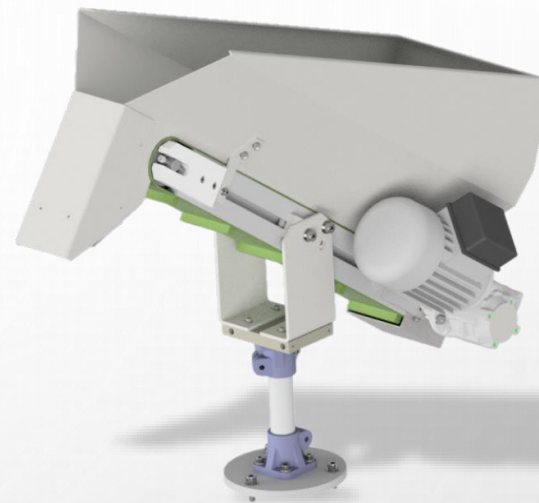


## PRODOTTI

### TRAMOGGIA A SILOS



### TRAMOGGIA MOTORIZZATA



### TRMOGGIA VIBRANTE



### TRAMOGGIA ELEVATRICE

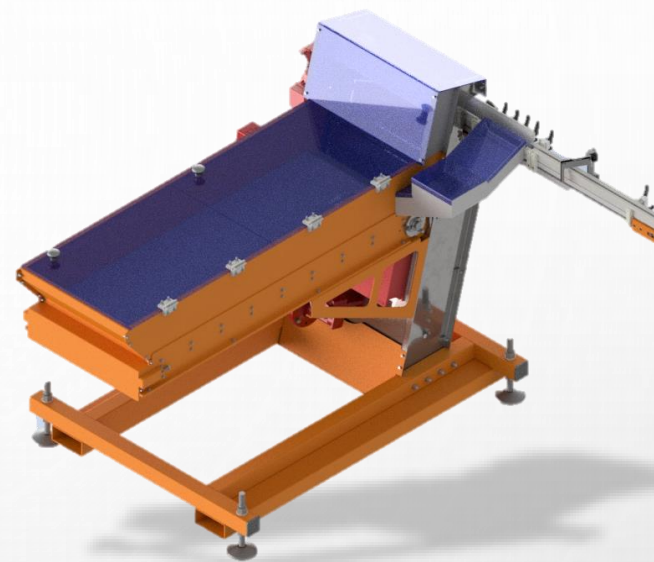


➤ PRODOTTI

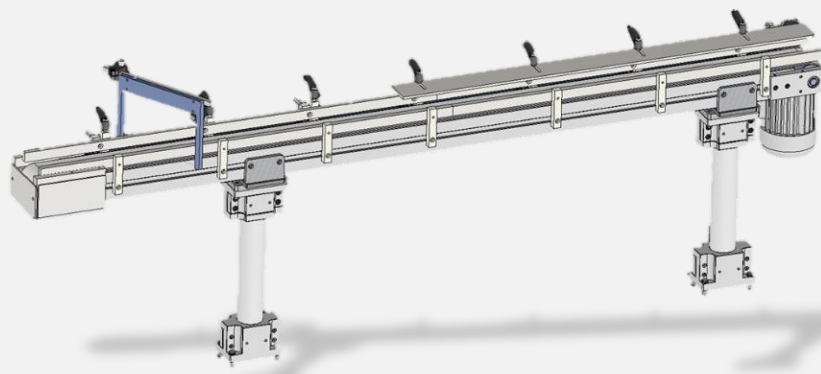
ELEVATORE ORIENTATORE



ELEVATORE A PIASTRE



NASTRI TRASPORTATORI

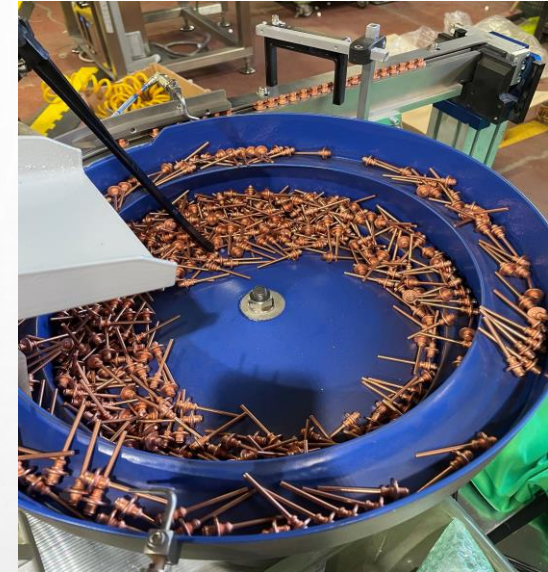


ELEVATORE FACCHINO





## PERSONALIZZAZIONI





## PERSONALIZZAZIONI





## CLIENTI



### PHARMA

Aptargroup 

*Nemera*

Berry 

**IBSA**

**gsk** GlaxoSmithKline

### FOOD

**FERRERO**

 **GOGGLIO**  
PACKAGING SYSTEM

**IMA**   
Sustain Ability

**ica**

### AUTOMOTIVE

**cebi**

 **CURTI**  
INDUSTRIES

**ABB**

**MAGNETI  
MARELLI**

 **BOSCH**



► CLIENTI



APPLIANCE



INDUSTRIALE



COSMETICA





THANK YOU

[tumac.eu](http://tumac.eu)

TUMAC S.R.L.

VIA DELLA LIBERAZIONE 33/35  
20097 SAN GIULIANO MILANESE

P.IVA IT 03729660153

TEL. +39 0298281013

[WWW.TUMAC.EU](http://WWW.TUMAC.EU)